



TRELLEBORG

# Trelleborg

## EMR1042



# EMR1042

## Superior performance for the toughest jobs

Designed for articulated dumper and suitable for loader applications, our EMR1042 tire is the best choice for haulage operations in open pits and quarries and also suitable for infrastructure and building construction and landscaping.

The Trelleborg EMR range is designed to enhance productivity in critical construction applications, delivering both enhanced damage protection and durability. The multi-surface tread design delivers control and perfect grip when it's needed the most, whether on sand, rock, gravel or soil.



**ALL-STEEL RADIAL  
CONSTRUCTION**



**REINFORCED  
CARCASS**



**MULTI  
SURFACE**



**EXCELLENT  
RIDE COMFORT**



### **Tread design**

The tire-block tread pattern is engineered to provide the perfect balance between wear resistance, powerful traction, and efficient self-cleaning across challenging terrains.



### **Shoulder design**

A shoulder engineered for maximum grip, ensuring consistent and reliable traction from day one to the end of service.



### **Cut-resistant compound**

This high performing compound is up to 20% more resistant to cuts and wear compared to standard compounds.

The tire lasts longer, reducing machine downtime, lowering cost per hour.



### **Sidewall protector**

Reinforced sidewalls prevent tire damage when operating over rough ground, such as rocky areas.



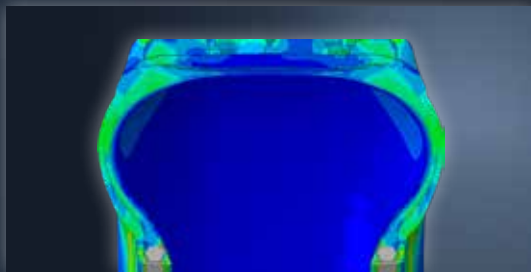
# 29.5R25 EMR1042 PRO-PIT

## Higher durability, higher performance

The new 29.5R25 EMR1042 PRO-PIT represents an enhanced evolution of the range, featuring an Cut-resistant compound, reinforced casing, and wider, stronger beads. Together, these upgrades deliver extended tire life and exceptional performance in the harshest operating conditions.

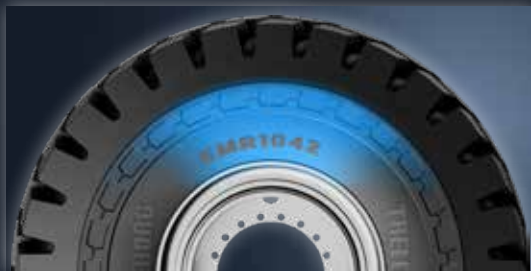
### 1 Reinforced casing

A stronger casing engineered to withstand extreme stress and demanding operations, ensuring durability even in the toughest conditions.



### 2 Optimized sidewall structure

Newly designed sidewalls to resist stress and enhance handling performance during operation.



### 3 Wider, stronger beads

+40% wider beads to prevent rim/tire slippage and to provide superior resistance under heavy loads and stress.



# EMR1042

## LOADER/TRANSPORT SERVICE

Tire size	Tread pattern	TRA Code	Rim size (Permitted)	Tread depth (mm)	Service description LI/SS Loader/Transport	Tire load capacity (kg) at 10 (km/h)	Tire pressure (bar)	Tire load capacity (kg) at 50 (km/h)	Tire pressure (bar)
23.5 R 25	EMR1042	L4/E4	19.50/2.5-25	51	** 201 A2/185 B	14.500	5.75	9.250	4.50
26.5 R 25	EMR1042	L4/E4	22.00/3.0-25	54	** 209 A2/193 B	18.500	5.75	11.500	4.50
29.5 R 25	EMR1042 PRO-PIT	L4/E4	25.00/3.5-25	58	** 216 A2/200 B	22.400	5.75	14.000	4.50
38.5/65 R 29	EMR1042 PRO-PIT	L4/E4	28.00/3.5-29	62	** 221 A2/203 B	25.750	6.25	15.500	4.25

\*/\*\* Index of tire strength

Compound High-TKPH available upon request



Shop our tires online



Discover our website

Follow us

