

Trelleborg

ANULTRAC[®]



PneuTrac® A new generation of farm tires

Increased focus on productivity, sustainability and farm efficiency drive the development of innovative products, technologies and solutions both in open field operations as well as specialized applications such as vineyards and orchards.

In this scenario, Trelleborg is strengthening its commitment towards innovative agriculture with the introduction of the PneuTrac®.

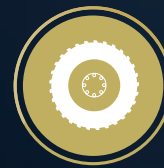
It combines the advantages of a radial agricultural tire with the benefits of a track delivering unbeatable performance on both steep slopes and muddy terrain, reducing your downtime to zero in demanding conditions. The extra-long PneuTrac® footprint results in superior flotation and traction along with exceptional lateral stability, without compromising fuel efficiency, comfort or handling.



**REDUCED
WIDTH**



**PREMIUM
TRACTION**



**SUPERIOR
FLOTATION**



**LOW SOIL
COMPACTION**

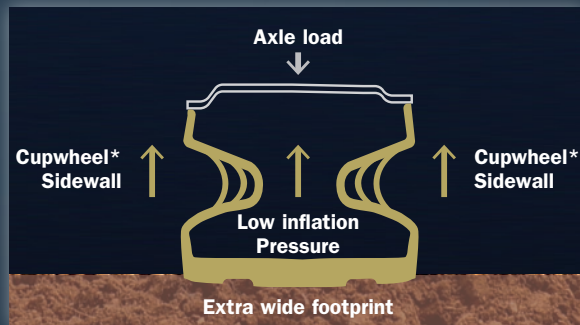
PneuTrac[®] key features

The new PneuTrac[®] contains the best-in-class features of Trelleborg agricultural tires along with a new sidewall; CupWheel Technology. The innovative “Omega” design of the sidewall helps the tire carcass to sustain load, simultaneously providing flexibility and an extra-wide footprint at very low pressure, resulting in very low soil compaction.

This new design allows the tread to work at 100% of its potential efficiency. The ProgressiveTraction[®] technology on the tread itself enhances traction whilst the inter-lug terraces improve the self-cleaning capability of the tire. The wide lug bases combined with a robust shoulder feature increase lateral stability especially on slopes.

1 CupWheel Technology

“Ω” Design



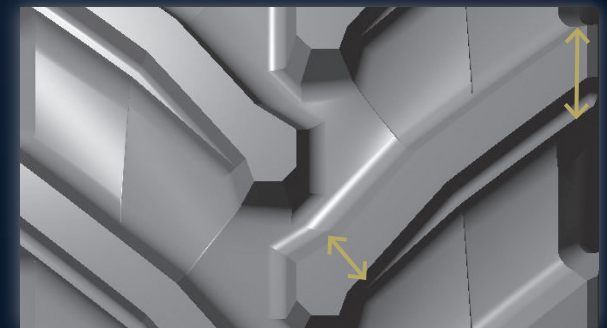
2 ProgressiveTraction[®] tread

Enhancing traction capacity on field and wear resistance on road



3 Wide lug base

The wide lug base and the robust shoulder design increase lateral stability especially on slopes



4 Interlug terraces

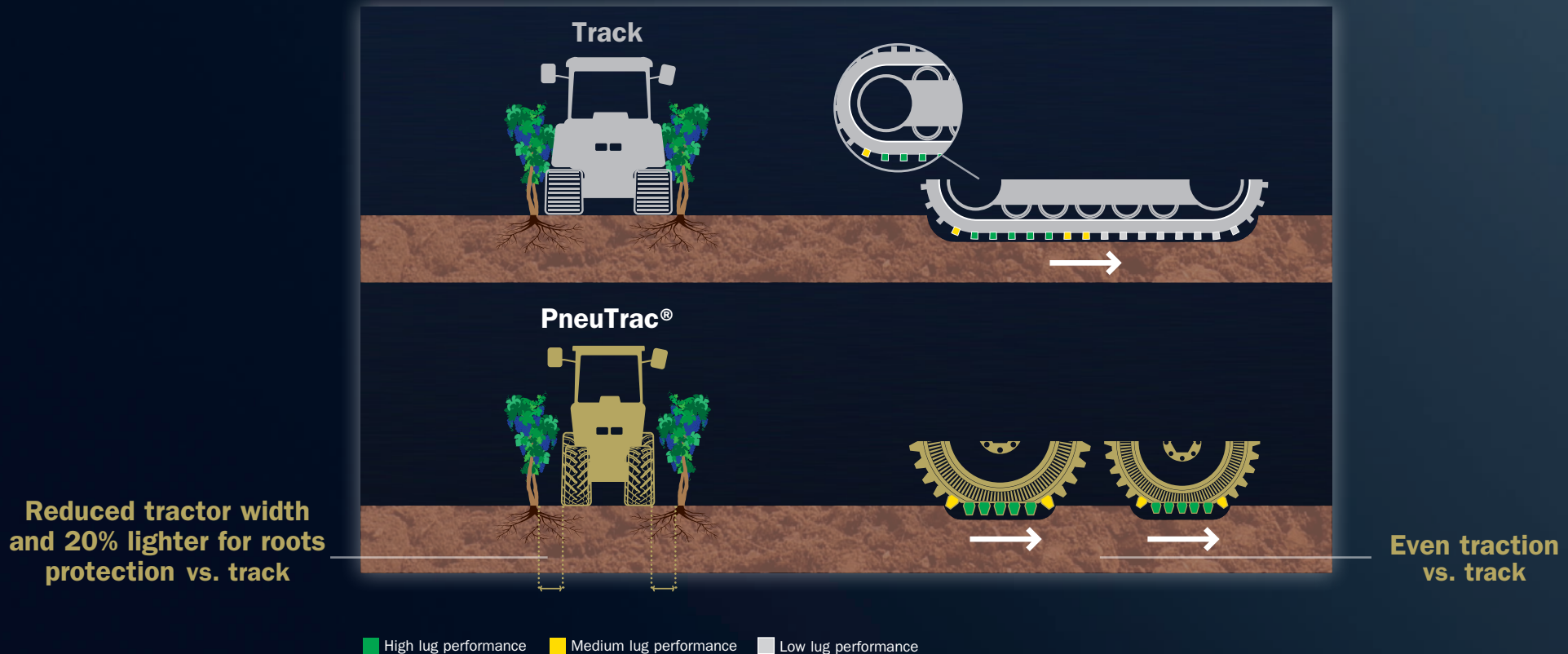
Assuring maximum self-cleaning capacity

*CupWheel technology by Galileo Wheel Ltd.

Superior performance vs conventional tracks

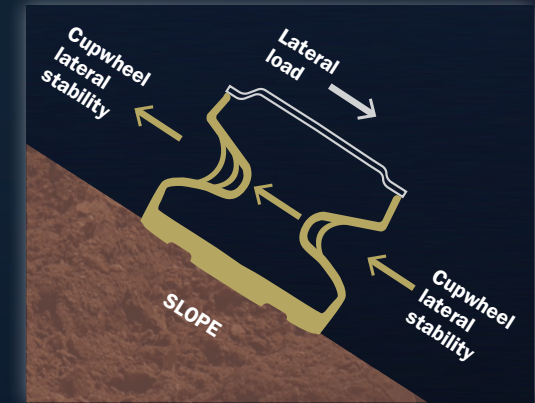
For vineyards and orchards avoiding damage to roots and topsoil is essential in protecting short and long term yields. PneuTrac® delivers all the flotation of a conventional agricultural track while reducing the total width of a tractor when compared to a standard tracked solution.

Tractors equipped with PneuTrac® are on average 20% lighter than conventional tracks with resultant less stress on soil. Moreover conventional track lugs are at their most efficient towards the rear of the assembly while the PneuTrac® gives lug efficiency for the entire length of its footprint. This results in even distribution of traction with both higher grip and lower soil compaction. The PneuTrac® combines the advantages of a radial agricultural tire, such as fuel efficiency, comfort and handling, with the benefits of a track, including flotation and traction on muddy terrain.



High lateral stability and superior comfort

The PneuTrac® delivers exceptional performance both on flat land and on slopes. It reduces significantly the risk of lateral slippage and consequent root, vine or tree damage as well as providing higher safety for machine operators.



High traction, when and where needed

When on slopes, after heavy rain, traction becomes an issue. The PneuTrac® proves high traction capability powered by the “Omega Design” of the sidewall and enhanced by the ProgressiveTraction® technology applied on the tread. This means high productivity and significant overall savings, including costs such as fuel, maintenance and manpower. In the most demanding of conditions PneuTrac® reduces machine downtime and keeps you working.

Traction performance - Index

Higher is better

106



PneuTrac®

100

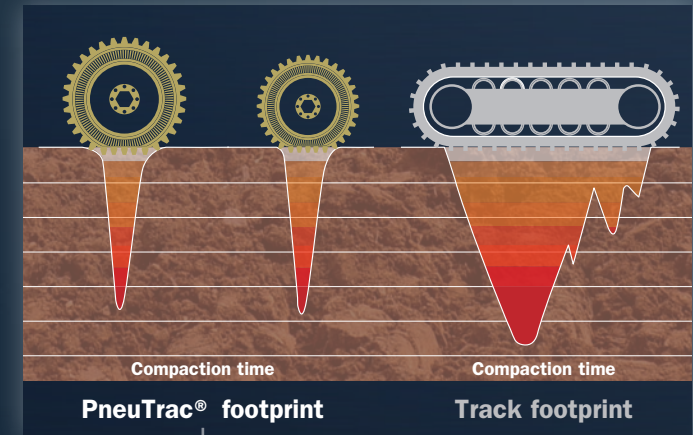


Track

**Up to +6%
vs. track**

High flotation. maximum ground care

To make agricultural operations both more productive and sustainable, soil compaction needs to be reduced as much as possible. Trelleborg PneuTrac® ensures premium flotation properties providing a footprint average 10% larger than a modern agricultural radial tire thereby protecting the ground. Soil compaction results from compression applied and the time for which this compression lasts. Under identical operating conditions, the PneuTrac® impacts on the ground for a significantly less time than when compared to a standard tracked vehicle, delivering an overall 20% lower soil compaction.



**-20% compaction
vs. track footprint**

In addition comfort and handling performance are at the same level as that of a radial tire solution. The “Omega” sidewall design handles uneven terrain without breaking its stride protecting equipment and operators alike.

Driver comfort - Index

Higher is better

119



PneuTrac®

100



Track

**Up to +19%
vs. track**

Handling - Index

Higher is better

160



PneuTrac®

100



Track

**Up to +60%
vs. track**

PneuTrac®

Size	Tread Pattern	SW mm	OD mm	SLR mm	RC mm	SRI	Rim	Permitted Rims	Type
VF 260/70R16* 110A8 (110B)	PneuTrac®								
VF 280/70R18 116A8 (116B)	PneuTrac®	290	848	386	2510	400	9		Tubeless
VF 280/70R20 118A8 (118B)	PneuTrac®	286	900	406	2690	450	9		Tubeless
VF 380/70R24* 137A8 (137B)	PneuTrac®								
VF 420/70R28 145A8 (145B)	PneuTrac®	419	1352	596	3970	650	W14		Tubeless
VF 480/65R28 148A8 (148B)	PneuTrac®	480	1340	595	3930	650	W16		Tubeless

* in preparation



Printed on recycled paper



Discover our website

Follow us



Yokohama TWS S.p.A.
Via Nazionale Tiburtina, 143 - 00019 Villa Adriana - Tivoli (RM), Italy
Phone: +39 0774 3841 – info.tws@yokohama-tws.com
www.trelleborg-tires.com